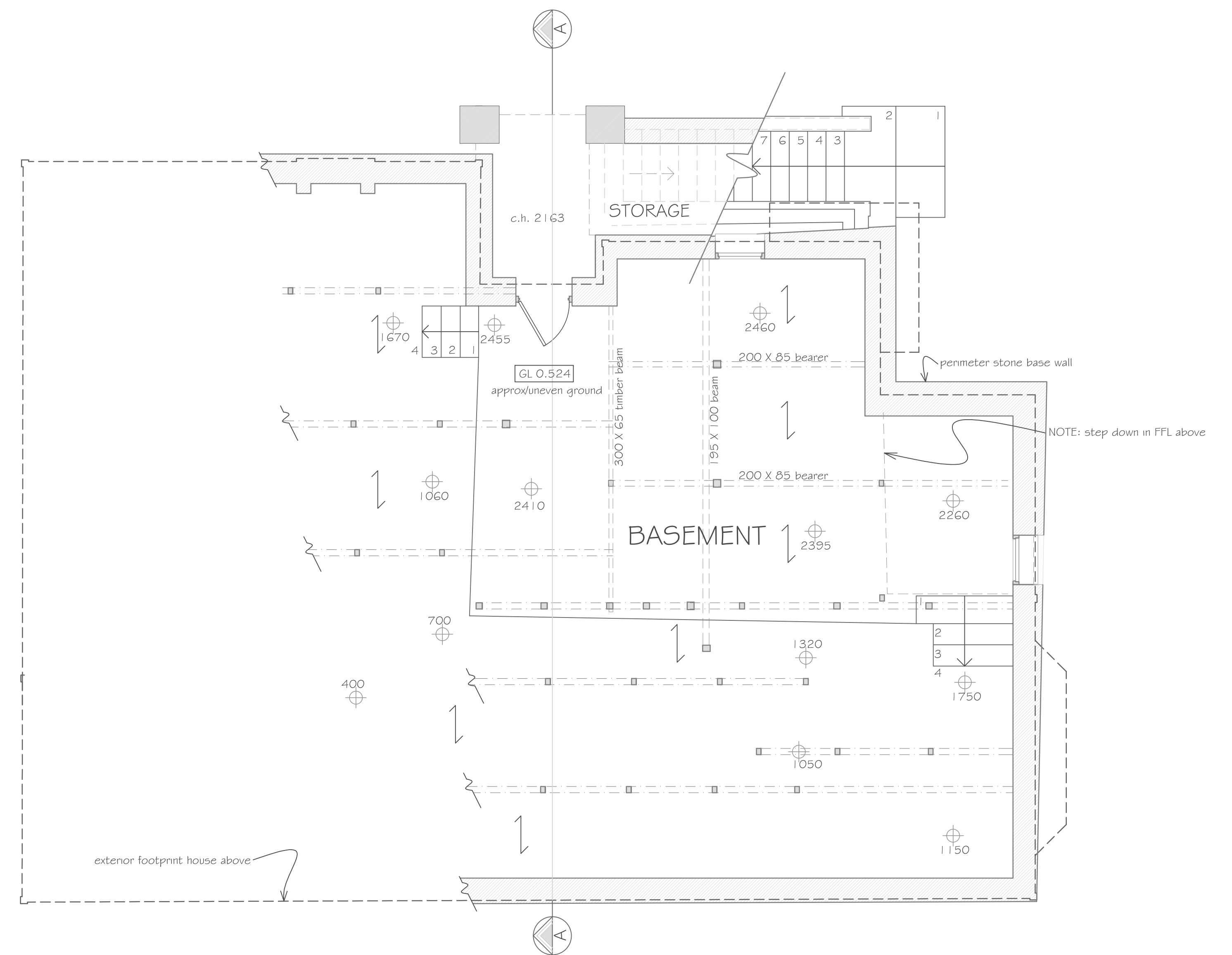


FIRST FLOOR PLAN scale 1 : 50



KEY

- 100 x 80 bearers (unless specified) = - - - - -
- timber piles = ■
- timber beams = - - - - -
- 150 x 50 @ 450 crs floor joists = $\leftarrow\rightarrow$
- spot levels: GL to u/s of floor boards above = ⊕

BASEMENT FLOOR PLAN scale 1 : 50

EXAMPLE OF TYPICAL FLOOR AND BASEMENT PLAN